



## VIGUETAS

**PRETENSADOS**  
SERIES | MEDIDAS | ARMADURAS



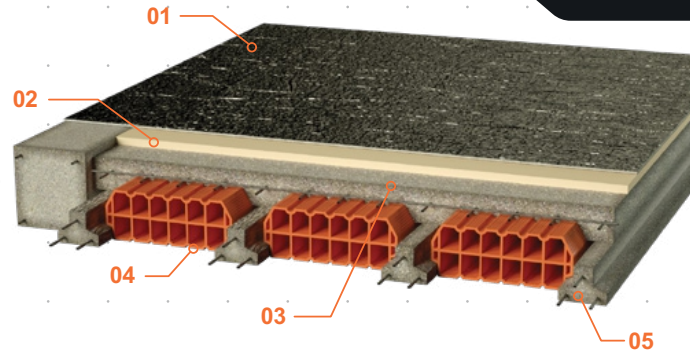
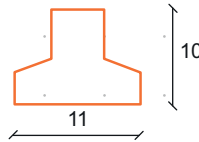
### DESCRIPCIÓN Y USO

Viguetas de hormigón pretensadas que, junto con bloques cerámicos de techo, forman un sistema constructivo liviano.

Permite resolver entresijos y techos con menor peso, sin necesidad de encofrados.

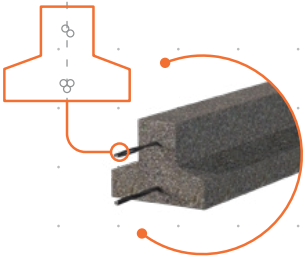
Peso por metro lineal = 16 kg.

- 01. Membrana Asfáltica
- 02. Carpeta de Nivelación
- 03. Capa de Compresión
- 04. Loseta Cerámica CHIRINO
- 05. Vigueta Pretensada CHIRINO



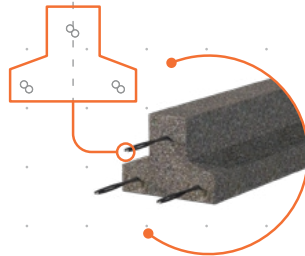
#### SERIE 0

Fe= 1 de 2 + 1 de 3  
1.00 a 2.80 mts. c/20cm.



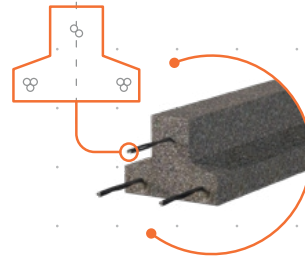
#### SERIE 1

Fe= 3 de 2  
2.20 a 3.80 mts. c/20cm.



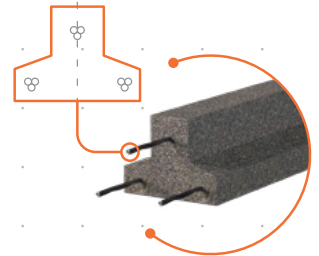
#### SERIE 2

Fe= 1 de 2 + 2 de 3  
2.80 a 4.40 mts. C/20cm.



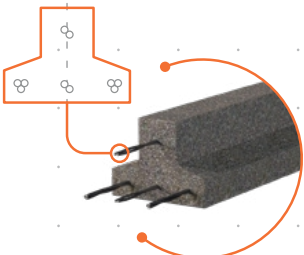
#### SERIE 3

Fe= 3 de 3  
3.40 a 5.00 mts. c/20cm.



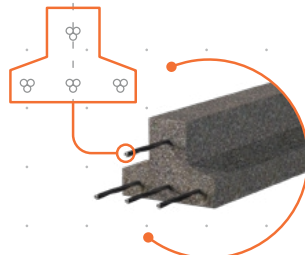
#### SERIE 4

Fe= 2 de 2 + 2 de 3  
4.00 a 5.20 mts. c/20cm



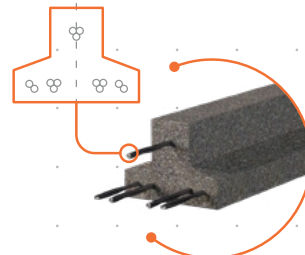
#### SERIE 5

Fe= 4 de 3  
4.00 a 6.00 mts. c/20cm



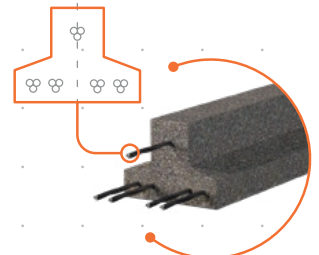
#### SERIE 6

Fe= 2 de 2 + 3 de 3  
4.60 a 6.60 mts. c 20/cm



#### SERIE 7

Fe= 5 de 3  
→ A PEDIDO



[www.industriaschirino.com](http://www.industriaschirino.com)



## VIGUETAS

### VIGUETAS PRETENSADAS

SERIES | MEDIDAS | ARMADURAS



Hormigón capa de compresión B255

Tb cilíndrica 170 Kg./cm<sup>2</sup>

Capa de Compresión    Espesor de Losa    Peso Proporcional

### MOMENTOS ADMISIBLES

BLOQUE CERÁMICO	cm	cm	Kg/m <sup>2</sup>	S0	S1	S2	S3	S4	S5	S6	S7	S8	S9
11-25-38	3	14	175.0	374.0	519.6	750.7	841.9	949.7	1112.5	1218.3	1413.7	1673.6	1893.1
	4	15	197.0	416.2	577.9	835.4	936.5	1056.5	1237.6	1355.0	1572.3	1862.2	2105.5
	5	16	219.0	461.0	640.0	925.0	1037.0	1170.0	1370.0	1500.0	1740.0	2060.0	2328.7
	6	17	241.0	505.7	702.0	1013.6	1137.0	1282.1	1501.8	1644.0	1906.8	2256.7	2551.8
12-25-38	3	15	203.0	422.5	583.2	829.1	944.4	1051.5	1243.4	1358.5	1578.2	1894.8	2101.1
	4	16	225.0	465.7	642.7	913.8	1040.4	1158.6	1370.1	1496.7	1738.7	2088.0	2314.9
	5	17	247.0	510.6	704.5	1001.0	1141.2	1269.5	1501.2	1639.7	1904.5	2286.2	2535.0
	6	18	269.0	555.4	766.2	1088.1	1239.4	1380.4	1632.3	1782.6	2070.4	2484.7	2755.1
16-25-38	3	19	234.0	617.1	844.4	1157.5	1314.5	1474.8	1727.5	1897.4	2184.0	2611.5	2959.4
	4	20	256.0	663.4	897.1	1228.6	1394.7	1564.4	1833.5	2013.3	2316.6	2771.1	3139.3
	5	21	278.0	709.2	949.9	1299.9	1475.2	1654.2	1940.0	2129.7	2449.5	2931.0	3319.7
	6	22	300.0	714.8	1002.8	1371.1	1555.7	1744.1	2046.4	2246.1	2582.5	3091.0	3500.1
16-38-25 DOBLE VIGUETA	3	19	296.0	1032.3	1351.9	1855.9	2013.1	2355.9	2771.3	3033.7	3506.1	4186.1	4718.2
	4	20	318.0	1098.5	1437.3	1964.3	2228.0	2495.4	2937.2	3214.6	3713.6	4435.7	4998.0
	5	21	340.0	1116.4	1522.9	2075.7	2354.6	2635.2	3103.6	3396.0	3921.6	4685.6	5278.3
	6	22	362.0	1196.5	1609.3	2181.0	2479.2	2775.0	3270.1	3577.2	4129.0	4935.5	5561.6